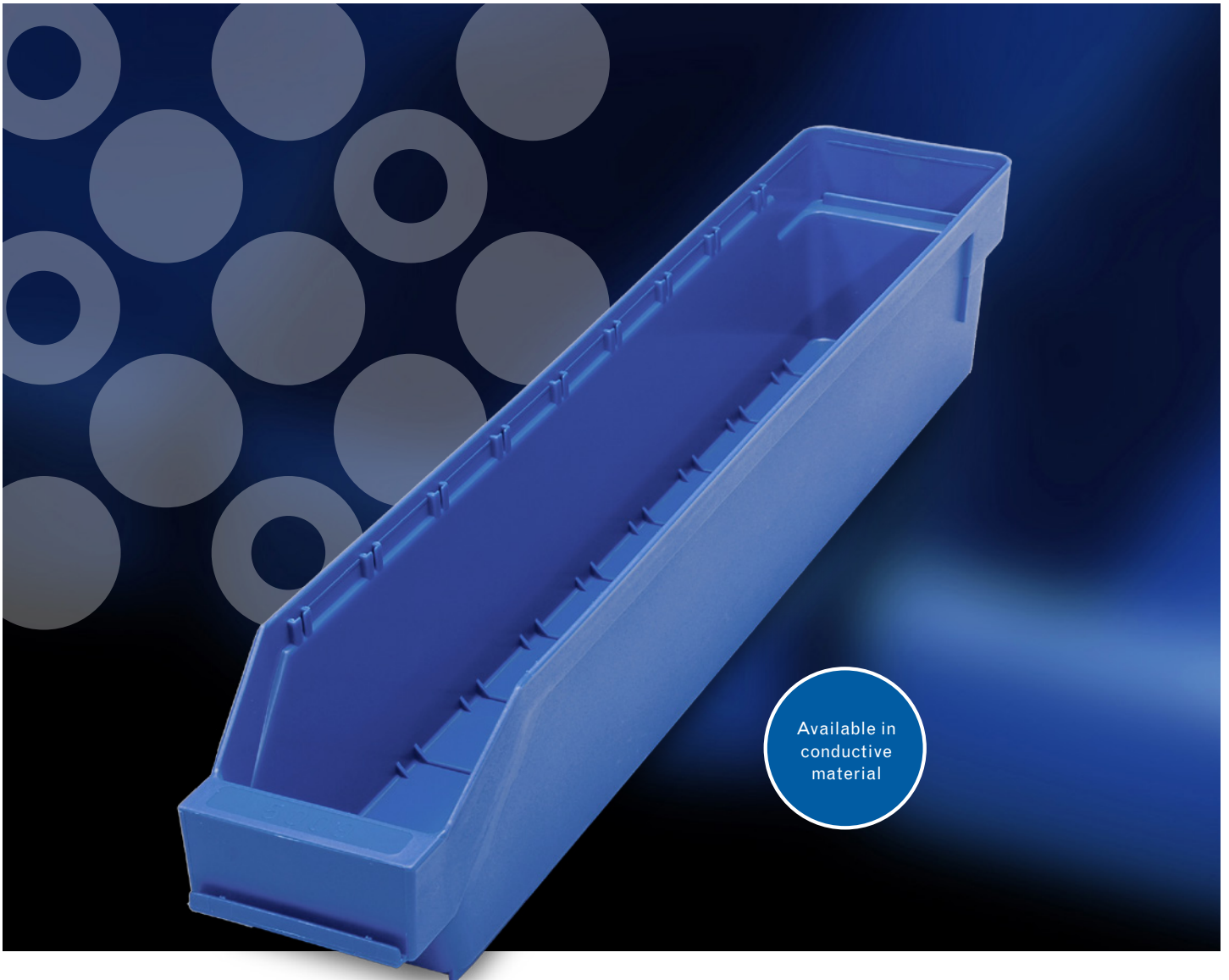


Component bin **TYPE 5009**



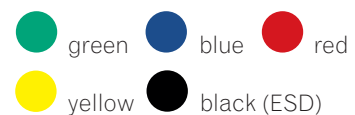
Available in
conductive
material

COMPONENT BIN

Type	5009
Art. no	500301 (green)
	510301 (blue)
	520301 (red)
	540301 (yellow)
	550301 (black ESD)
Dimensions mm	500x90x95
Interior dimensions	445x70x88
Dividers/bin	9
No/carton	40
Kg/m ³ per carton	11,2/0,10
No/pallet	800
Material	PP
Temperature constant	-20° to +80°C

- Compact design
- Cost-effective
- Ergonomic
- High Impact Polypropylene
- 16 sizes

All models in 5 different colours:



STEMO AB | Box 95 | SE-565 22 Mullsjö, Sweden
 Tel: +46(0)392 495 00 | info@stemo.se
www.stemo.se